

IQ[®]



Inverter



WIFI



ECO ENERGY
SAVING TECHNOLOGY



FASTER
COOLING



RAPID COOLING &
HEATING

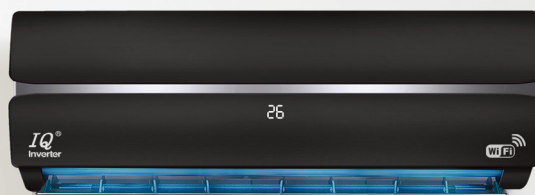


R32
REFRIGERANT



WIDE VOLTAGE
OPERATION

WIFI control



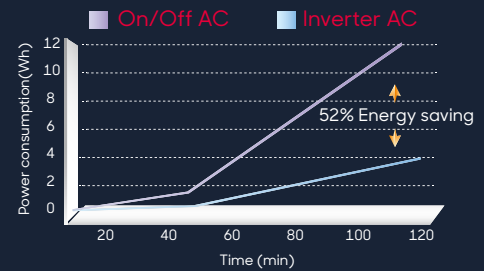
Control your airconditioner through wifi technology such as mobile phones and tablets with a user friendly App, connection any time anywhere.

Model		IQ-H12T4/PA172D		IQ-H18T4/PA172D		IQ-H24T4/PA172D	
(Ph-V-Hz) Rated volt and frequency		1-220-240/50		1-220-240/50		1-220-240/50	
Mode		Cooling	Heating	Cooling	Heating	Cooling	Heating
(W) Rated capacity		3500W	3500W	5100W	5100W	6500W	6500W
(W) Power input		1090W	990W	1580W	1540W	2000W	1850
(A) Current input		4.9A (0.8A~6.9A)	4.5A (0.8A~6.2A)	7.4A (1.0A~8.3A)	7.3A (1.0A~8.5A)	9.2A (1.2A~10A)	8.5A (1.2A~9.4A)
(W/W) EER/COP		3.21	3.54	3.23	3.31	3.25	3.51
(W/W) SEER/SCOP		6.1	4	6.1	4	6.1	4
(W)Design load		3200	2400	5000	3700	6100	4800
Max. input consumption		1750		2400		3000	
Max. current		8		11		14	
Indoor Unit	(m³/h) Indoor Air Circulation	≥600m³/h		≥700m³/h		≥1000m³/h	
	(mm) Dimension (L*W*H)	780×276×202		850×276×202		950×313×240	
	(mm) Packing (L*W*H)	855×340×275		925×340×275		1025×385×310	
	(Kg) Net/Gross weight	9/11		11/13		14/16	
	(dB/A) noise sound pressure level	22~40		26~40		32~44	
	(dB/A) Sound power noise	32~50		36~50		42~54	
Outdoor Unit	(mm) Dimension (L*W*H)	685×231×503		820×292×546		820×292×546	
	(mm) Packing (L*W*H)	798×321×554		934×382×608		934×382×608	
	(Kg)Net/Gross weight	20/23		28/32		30/34	
	(dB/A) noise sound pressure level	51		54		55	
	(dB/A) Sound power noise	61		64		65	
	Refrigerant type/weight	R32/530g		R32/1010g		R32/1200g	
	Defrost mode	Auto		Auto		Auto	
Refrigerant piping(mm)		(mm)Liquid side/ Gas side/Length	1/4 + 3/8 x 3000	1/4 + 3/8 x 3000	1/4 + 3/8 x 3000	1/4 + 1/2 x 3000	
		Max. refrigerant pipe length/Max. difference in level	15/5	15/5	15/5	15/5	

More energy-efficient

3D DC inverter, high efficiency and energy saving

By combining the high-efficiency DC inverter compressor and outdoor DC motor with the DC control system, Comprehensively enhances the airconditioners performance and ensures real-time adjustment of the motor speed and refrigerant flow according to the changing enviroment, making the A/C unit more energy efficient with maximum cooling and heating performance.



Indoor DC motor

The DC motor driven by the permanent magnetic field ensures energy efficiency and achieves ultra-quiet operation.

Outdoor DC motor

High-efficiency outdoor DC motor ensures better energy efficiency and reliable operation of the unit.

DC inverter compressor

Reliable operation, strong power, high efficiency and energy saving.

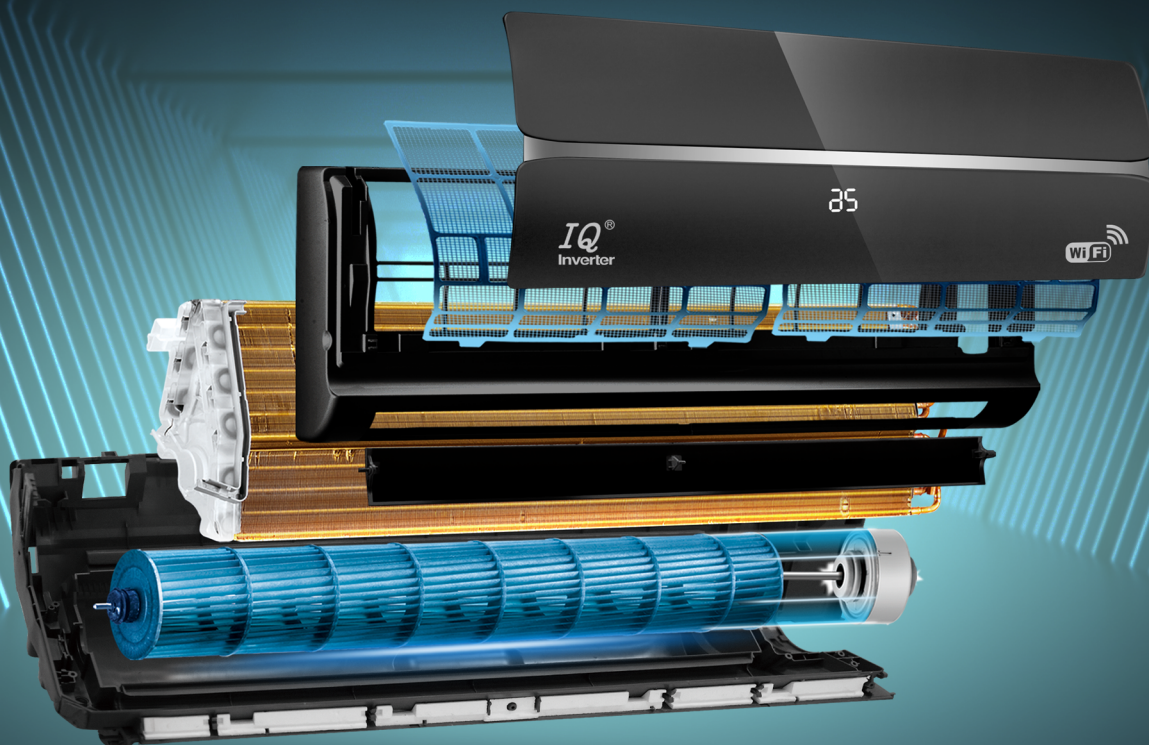
ECO Mode

With the Eco function the air-conditioner can ensure the refrigerant in low frequency mode to control a lower power consumption. The wall-mounted air conditioner saves 30% of electricity, while the cabinet-type air conditioner saves 20%.

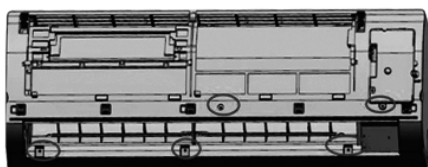


■ Easier

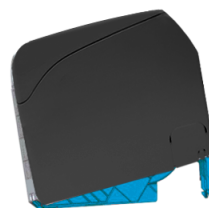
Convenient assembly , optimized processing which ensures simple installation and maintenance saving you time.



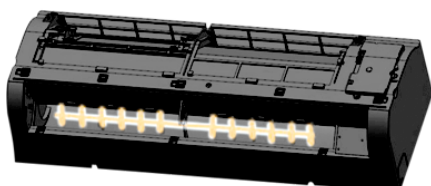
Durable outer casing preventing accidental damage during handling.



The intergated design of the base and middle frame ensures a more flexible structure as well as easier assembly and disassembly.



The integrated installation of blades ensures high efficiency.



The two-sided water outlet design ensures flexible and convenient operation during installation.

